

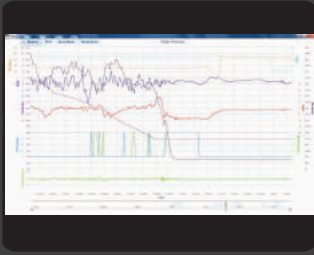
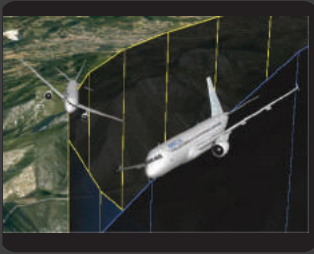
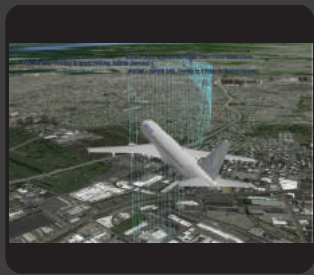
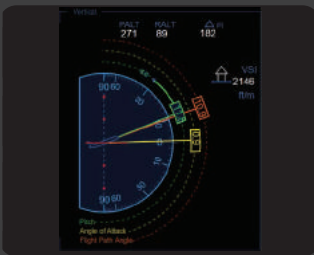
## Next Generation Accident Investigation System

Support/training provided by internationally recognized subject matter experts in flight recorder playback, analysis and flight animation



## **NEW** aircraft generic display optimized for analysis plus traditional cockpit replica displays

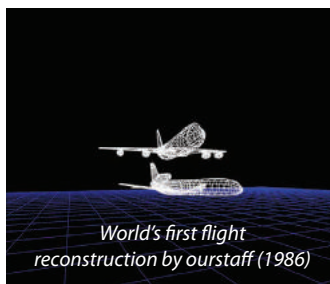
- Accepts flight data from ALL FDR/QAR/DAR/CSV/Radar sources
- Extensive interactive mathematical tools
- Advanced lighting/weather modelling, simulation, synthetic terrain & airports
- Integrated engineering units transcription engine interacts directly with ARINC source data
- XML data map library format (ARINC 647A FRED)



## Key Features

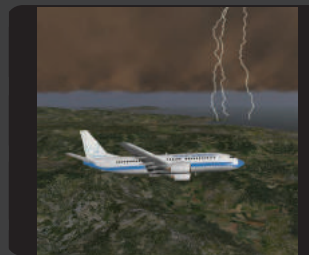
- NEW aircraft generic investigation display
- Replica cockpit instrumentation
- Extensive weather modelling
- Advanced Flight path reconstruction (with rubber band adjustment feature)
- XML format (FRED) datamap library
- GoogleEarth and X-Plane interface
- Unparalleled aircraft realism
- Multiple aircraft capability
- Interactive animation web viewer (WebFAS)

No organization has more experience in flight recorders and flight animation than Plane Sciences/AIR



## System Requirements:

- X-Plane 10 Pro
- Google Earth/Cesium
- Windows Vista SP2 or higher
- Internet Explorer 9 or higher
- 2GB RAM ( more is better )
- 2GHz Dual Core Processor and higher
- 2 GB available disk (40GB disk space to download full Scenery)
- Dedicated GPU with minimum 512MB video RAM



a Plane Sciences strategic partner  
www.airinc.ca

Advancing Aviation Safety & Efficiency  
through innovative technology

Plane Sciences  
Ottawa, Canada  
+1 613 749 1015 ext: 401  
+1 613 716 8997  
sales@planesciences.com  
www.planesciences.com